

# WOLONG ESS

## WL-ESS-5015kWh-1500V



### High Efficiency

- High energy density, high charge/discharge cycle efficiency
- 1500V DC high voltage system, high efficiency LFP battery



### Safe and Reliable

- Intelligent management, active control, multi-level linked protection
- Cluster-level isolation, no parallel design
- Active ventilation, fire and explosion protection design
- Intelligent fault diagnosis, SOC automatic correction, easy to maintain



### High Balance

- Accurate control of battery cell temperature, high consistency



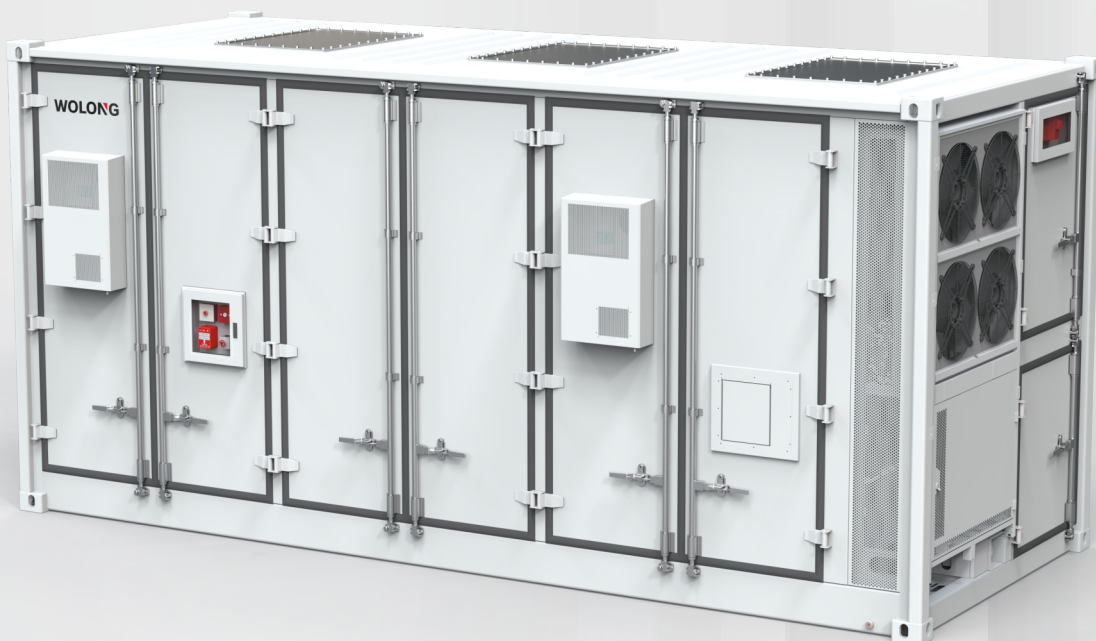
### High Adaptability





- IP54 Protection, wind resistant, snow resistant, and earthquake resistant design
- Can operate in harsh environments such as high altitude, near the sea, high and low temperatures, etc



### High Integration

- Modular and standard design, plug-and-play, easy to transport and install
- Intelligent and quick response



|                                     |   |
|-------------------------------------|---|
| <b>System Model</b>                 | <b>WL-ESS-5015kWh-1500V</b>   |
| <b>System Parameters</b>            |   |
| Battery Cell Type                   | LFP/314Ah   |
| Battery Configuration               | 12P416S   |
| Battery Capacity at DC Side (BOL)   | 5,015kWh  |
| Maximum P-Rate / Discharge Duration | 0.5P / 2 Hours - 4 Hours  |
| Battery Rated Voltage               | 1,331.2V  |
| Voltage Range                       | 1,164.8~1,497.6V  |
| Container Size (W×D×H)              | 6,058×2,438×2,896mm (20×8×9.5ft)  |
| Container Weight                    | 40,000kg  |
| Container Colour                    | RAL 7035  |
| IP Level                            | IP 54   |
| Anti-Corrosion                      | Default: C4<br>Optional: C5   |
| Operating Temperature Range         | -25°C~50°C(>45°C de-rating) / -13°F ~ 122 °F (>113 °F de-rating)  |
| Relative Humidity                   | 5%~95%  |
| Highest Working Altitude            | 3,000m  |
| Temperature Control Method          | Liquid Cooling  |
| Fire Suppression System             | Default: Aerosol, Smoke, and Temperature Detector, Ventilation System<br>with Flammable Gas Detector, Dry Pipe Fire Sprinkler<br>Optional: Deflagration Panel   |
| Communication Interface             | Ethernet  |
| Communication Protocol              | Modbus TCP, IEC 61850, IEC 104  |
| Compliance Standard                 |     <b>UN38.3</b><br>UN9540A    UL9540    UL1973    NFPA 855    UN38.3 |

